

Title: Modeling COVID-19 and impacts on U.S. Immigration and Enforcement (ICE) detention facilities, 2020

Journal of Urban Health 2020 (*in press*)

Michael Irvine, PhD, MSc\*, British Columbia Children's Hospital Research Institute, Vancouver, British Columbia, Canada

Daniel Coombs, PhD, MSc\*, Department of Mathematics and Institute of Applied Mathematics, University of British Columbia, Vancouver, British Columbia, Canada

Julianne Skarha, BA&Sc, Department of Epidemiology, Brown University School of Public Health, Box G-S121-3, Providence, RI 02912

Brandon del Pozo, PhD, MPA, MA, Brown University School of Medicine, The Miriam Hospital, Providence, RI USA.

Josiah Rich, MD, MPH, Brown University School of Medicine, The Miriam Hospital, Providence, RI USA.

Faye Taxman, PhD, Center for Advancing Correctional Excellence, Department of Criminology, Law and Society, George Mason University, Fairfax, VA USA

Traci C. Green, PhD, MSc, Opioid Policy Research Collaborative, Heller School for Social Policy and Management, Brandeis University, Waltham, MA USA; Departments of Emergency Medicine and Epidemiology, Brown Schools of Medicine and Public Health, Providence, RI USA

\*Daniel Coombs, PhD, MSc and Michael Irvine, PhD, MSc are co-first authors.

Funding: This study was funded by grants from the National Institute of General Medical Sciences (P20GM125507) and the National Institute on Drug Abuse (2T32DA013911-16A1). The funding organizations had no role in the design and conduct of the study; in the collection, analysis, and interpretation of the data; and in the preparation, review, or approval of the manuscript.

Conflicts of interest: none

Word count (text): 4099 words

Word count (abstract): 278 words

Corresponding author:

Traci C. Green, PhD, MSc

Opioid Policy Research Collaborative

The Heller School for Social Policy and Management

Brandeis University

415 South Main St. MS 035, Waltham, MA 02454-9110

Traci.c.green@gmail.com

(617) 909-9919 (phone)

## Modeling COVID-19 and impacts on U.S. Immigration and Enforcement (ICE) detention facilities, 2020

### **Abstract**

U.S. Immigration and Enforcement (ICE) facilities house thousands of undocumented immigrants in environments discordant with the public health recommendations to reduce the transmission of 2019 novel coronavirus (COVID-19). Using ICE detainee population data obtained from the ICE Enforcement and Removal Operations (ERO) website as of March 2, 2020, we implemented a simple stochastic susceptible-exposed-infected-recovered model to estimate the rate of COVID-19 transmission within 111 ICE detention facilities, and then examined impacts on regional hospital ICU capacity. Models considered three scenarios of transmission (optimistic, moderate, pessimistic) over 30-, 60-, and 90-day time horizons across a range of facility sizes. We found that 72% of individuals are expected to be infected by day 90 under the optimistic scenario ( $R_0=2.5$ ), while nearly 100% of individuals are expected to be infected by day 90 under a more pessimistic ( $R_0=7$ ) scenario. Although asynchronous outbreaks are more likely, day 90 estimates provide an approximation of total positive cases after all ICE facility outbreaks. We determined that, in the most optimistic scenario, coronavirus outbreaks among a minimum of 66 ICE facilities (59%) would overwhelm ICU beds within a 10-mile radius and outbreaks among a minimum of 9 ICE facilities (8%) would overwhelm local ICU beds within a 50-mile radius over a 90-day period, provided every ICU bed were made available for sick detainees. As policymakers seek to rapidly implement interventions that ensure the continued availability of life-saving medical resources across the United States, they may be overlooking the pressing need to slow the spread of COVID-19 infection in ICE's detention facilities. Preventing the rapid spread necessitates intervention measures such as granting ICE detainees widespread release from an unsafe environment by returning them to the community.

## Background

The United States operates the largest immigrant detention system in the world,<sup>1</sup> with over 140,000 immigrants arrested in 2019, or nearly 383 people a day. The conditions of confinement at U.S. Immigration and Enforcement (ICE) facilities are designed to control and closely surveil the population. This setting is discordant with public health guidance aiming to reduce the transmission of 2019 novel coronavirus disease (COVID-19), especially including advice around physical distancing and frequent hand washing. Furthermore, because detained immigrants are not housed individually or in cells as is true in many prison settings, detainees have more contacts with one another and with staff, thereby contributing to faster spread of infection than in correctional facilities. On March 24, 2020, ICE recorded its first documented COVID-19 case: a 31-year-old immigrant at Bergen County Jail in New Jersey. This case, documented less than a week after a correctional staff member at the facility also tested positive,<sup>2</sup> underscores the potential of this virus to rapidly spread in enclosed environments and the potential for COVID-19 outbreaks in other detention facilities. As of April 16, 2020, ICE reported that 100 detainees had tested positive for COVID-19, across 13 states.<sup>3</sup>

COVID-19 is a respiratory illness that most severely affects individuals over the age of 65 and individuals with underlying health conditions, such as those who are immunocompromised, have asthma, or suffer from diabetes. COVID-19 can lead to severe conditions, including breathing difficulties and lung damage, hospitalization, admission to a hospital intensive care unit (ICU) and death. Although public data on the health status and underlying health conditions of individuals detained in ICE detention facilities are limited, numerous reports document insufficient medical care as detailed in the lay press,<sup>4</sup> whistleblower complaints,<sup>5, 6</sup> and a Department of Homeland Security report.<sup>7</sup> The poor medical care of detainees includes missed diagnoses and incorrect vaccine doses. Additionally, the literature documenting the health of undocumented individuals indicates they are more likely than the general population to be uninsured, have had poor prenatal care, and face stressors such as stigma, discrimination, and fear of deportation—all factors that negatively impact physical and mental health.<sup>8-10</sup>

In response to mounting concern about the potential for a COVID-19 outbreak among this highly vulnerable population of individuals held in detention facilities, ICE has reportedly implemented several measures aimed at reducing the risk of virus transmission. Such measures are said to include suspending social visitation and releasing a small subset of individuals who are determined to be a low “threat to public safety, flight risk, and national security” and have underlying health conditions that may cause acute complications upon infection.<sup>3</sup> However, outbreaks at correctional facilities across the country suggest that these measures are insufficient to prevent COVID-19 infections within enclosed environments. Cook County Jail, for example, was the largest single-site source of COVID-19 cases in the nation. From March 22 to April 12, 2020, the number of cases at the jail grew from one incarcerated individual to over 300 known cases among prisoners, and over 180 among correctional staff. On April 20, 2020, the Marion Correctional Institution, an Ohio prison, reported a 78% COVID-19 infection rate: 1,950 inmates and 154 staff had been diagnosed with the virus there.<sup>11</sup> The prison reported its first case just three weeks prior on March 29th,<sup>12</sup> underscoring the fast pace of transmission in such environments.

As COVID-19 continues to spread in communities, and inevitably into the nation’s detention centers, it is critical that we understand the U.S. healthcare system’s capacity to care for a large influx of patients who require critical care. In the present study, we estimate the number of COVID-19 cases likely to occur within ICE detention facilities, using varying levels of virus

transmissibility, and examine the capacity of local hospitals to care for additional patient ICE detainees over 30-, 60-, and 90-day time horizons.

## Methods

### *Model*

We implemented a simple stochastic susceptible-exposed-infected-recovered (SEIR) model. In this model, individuals are initially susceptible (S) to COVID-19 infection and become infected and transition to an exposed class (E) at a rate dependent on the reproductive number, known as the  $R_0$ , and the proportion of individuals who are currently infectious (I). Individuals in the exposed class then transition to an infectious state (I) after a latent period and, finally, to a recovered state (R) at a constant recovery rate. The SEIR model and related variants support the vast majority of COVID-19 modeling studies around the world at present.

The transition states of the model are:

$S \rightarrow E$  at rate  $\beta SI/N$

$E \rightarrow I$  at rate  $\sigma$

$I \rightarrow R$  at rate  $\gamma$

Where  $N$  is the fixed population size,  $\beta$  is the transmissibility,  $1/\sigma$  is the incubation period, and  $1/\gamma$  is the recovery period. All events are assumed to be Poisson-distributed and a Tau-leaping method was implemented to draw realizations of the epidemic process. For each scenario, 1000 replicates were drawn. To prevent stochastic burn-out, we performed simulations using an initial condition of five infectious detainees. Numbers of cases are reported as medians with confidence intervals arising directly from multiple realizations of the stochastic model. In addition to estimating the number of infected individuals, our simulations also show the timing and size of the peak of the epidemic (see Supplementary Information).

The estimated proportion of infected people requiring hospitalization and/or ICU admissions during our simulated epidemics are calculated from the cumulative number of infectious individuals over 30-, 60-, and 90-day time horizons. The numbers of individuals requiring hospitalization or ICU admission were estimated based on the age distribution of people within the facility (see below), multiplied by Centers for Disease Control and Prevention (CDC) estimates of the fraction of infected people within defined age classes requiring treatment.<sup>13</sup> We used the minimum rate for each age-group in our calculations.

### *Initial conditions*

On day 0 of the epidemic, five individuals are assumed to be infected (in state I), with the rest being susceptible for a range of fixed population sizes chosen to be reflective of facility sizes: 50, 100, 500, and 1000.

### *Parameterization*

Given the current unknowns in the rate of spread of COVID-19 in detention centers, epidemiological parameters were based on estimates of an outbreak on cruise ships, representing a controlled environment with a high rate of contact between individuals.  $R_0$  is the expected number of cases directly generated by one case in a population where all individuals are susceptible to infection and is a product of the rate of contact between individuals, the probability of infection per contact, and the average time an individual is infectious. Estimates for the  $R_0$  based on the Diamond Princess cruise ship outbreak range from 2.28 (95% CI: 2.06-2.52)<sup>14</sup> to as high as 14.8.<sup>15</sup> Outbreaks have also been documented onboard several other cruise ships and navy ships, including the aircraft carrier USS Theodore Roosevelt, where nine crew members are currently hospitalized and one has died. Studies based on these confined settings for viral spread will provide additional information for future studies. Drawing from the published estimates, we studied three scenarios ranging from a most optimistic to most pessimistic estimate of the  $R_0$  as 2.5, 3.5, and 7 for low, medium, and high  $R_0$  scenarios, respectively. The incubation and infectious periods were estimated to be 6.4 days<sup>16</sup> and 7 days<sup>17</sup> respectively.

### *Population Data*

ICE detainee population data were downloaded directly from the Department of Homeland Security Enforcement and Removal Operations (ERO) website. The average number of detainees between October 1st, 2019 to March 2nd, 2020 was used to approximate the current number of people detained at each detention facility and summed to approximate the total number of people currently detained by ICE. To our knowledge, these are the most up-to-date estimates of detainees per facility. We excluded facilities with less than 25 people to meet the minimum population requirement for stability of estimates in the COVID-19 model. ICE currently withholds the age of arrest for detainees,<sup>18</sup> thus we used the age distribution provided by the Freedom for Immigrants, an advocacy organization that has interviewed thousands of people in immigration detention and reported age demographics in April 2019.<sup>19</sup>

We determined ICU capacity using the Definitive Healthcare USA Hospital Bed data.<sup>20</sup> Definitive Healthcare is a leading provider of data on healthcare organizations throughout the USA and has made these data freely available during the COVID-19 crisis. We used the version of this data updated on April 3<sup>rd</sup>, 2020. The Definitive Healthcare USA group also created an ICU capacity predictor tool.<sup>21</sup> This tool combines ICU hospital bed and ventilator availability/utilization data, Census Bureau population density, demographic information, and New York Times COVID-19 case data to determine the ICU capacity per county. We pulled this information for each county with an ICE facility. We then determined the ICU capacity for each ICE facility in a geospatial analysis program (ArcGIS; ESRI, Redlands, CA). We geocoded the ICE facilities and incorporated the Definitive Healthcare USA hospital bed data for analysis. We used the geospatial Buffer tool to create a 10-mile and 50-mile buffer around each ICE facility (Buffer, ArcGIS). Radii of 10 and 50 miles were selected as healthcare service catchment areas within which detention facilities may reasonably be expected to transport for patient care.<sup>22</sup> We used the Spatial Join tool from the spatial analysis toolbar to pull ICU bed information from the hospitals that were located in the 10-mile and 50-mile ICE facility buffers (Spatial Join, ArcGIS). We summed the ICU bed total per ICE facility (R, version 3.3) and applied the Definitive Healthcare USA ICU capacity predictor to determine the final number of ICU beds available to each ICE facility.

## **Results**

Data for the models of COVID-19 infections, hospitalizations, and ICU admissions considered the average detention population from October 1, 2019 to March 2, 2020 in 111 facilities across 32 states. The number of detainees in each facility during this period ranged from 25 to 1600 (average 381, median 234 detainees), with a total of 42,435 individuals detained. Thirty-two percent (n=35) of the included facilities hold only ICE detainees, and 68% (n=76) are city or county correctional facilities that hold ICE detainees and other individuals who are incarcerated. Although sex data were not available at the individual level, we obtained facility-level sex data. There were 577 women held in two female-only facilities; 15,560 individuals were held in 43 male-only facilities; and 26,208 detainees were in facilities that held both females and males.

Based on 2019 data provided by Freedom for Immigrants, the majority of immigrants detained by ICE are between 26 and 35 years old, where the median age is 30.<sup>19</sup> Country of origin for detainees included in this analysis was not available, however, a 2019 report by the US Government Accountability Office found that the majority of detentions from 2015 through 2018 were males from Mexico, Guatemala, El Salvador, and Honduras, without a previous arrest or conviction record.<sup>23</sup>

#### *Number of infections over time in single-facility outbreaks*

Table 1 shows the estimated number of COVID-19 cases across the three R0 scenarios over 30-, 60-, and 90-day time horizons, for ICE facilities holding 50, 100, 500 and 1000 detainees. In a facility holding 1000 people, under the most optimistic scenario (R0=2.5), a median of 62 individuals are expected to have been infected by day 30, 363 by day 60, and 722 by day 90. Under the least optimistic scenario of R0=7, the number of cumulative COVID-19 cases is modeled to increase from 732 by day 30, to 989 by day 60, to 993 by day 90. The day 90 estimates, corresponding to 76%, 80%, 77% and 72% of all detainees in facilities of size 50, 100, 500 and 1000 detainees, gives a sense of the total population of ICE detainees who are likely to be infected by the end of an ICE facility outbreak under the most optimistic scenario of R0=2.5 (Figure 1). Regarding the timing and size of the peak of the epidemic, as one would predict, simulated epidemics within small facilities reach their peak earlier than those within large facilities (for example, on day 19 for facilities of 50 detainees vs day 69 for facilities of 1000 detainees with R0=3.5, see Supplemental Materials).

#### *Healthcare service utilization during facility outbreaks*

Under the most optimistic scenario (R0=2.5), and imagining synchronized epidemics across all facilities, a median of 917 detainees system-wide will become infected and require hospitalization within the first 30 days, growing to an aggregate of 3129 patients by day 60 and 4909 by day 90. Averaging across the total ICE system, this represents 11.6% of all detainees. The high hospitalization rate is driven by sustained transmission leading to very high fractions of detainees becoming infected, in the absence of robust and sustained countermeasures. The corresponding numbers for ICE facilities of different sizes at day 90 are given in Table 1. Under the pessimistic scenario of R0=7, and imagining synchronized epidemics across all facilities, a median of 5145 detainees system-wide will become infected and require hospitalization within the first 30 days, growing to an aggregate of 6391 patients by day 60 and 6408 patients by day 90. Averaging across the total ICE system, this represents 15.1% of all detainees. Concretely, in a facility housing 1000 detainees, the estimated median number of people infected and requiring hospitalization by day 30 ranges from 10 (R0=2.5) to 26 (R0=3.5) and 116 (R0=7) and by day 90 ranges from 114 (R0=2.5) to 148 (R0=3.5) and 157 (R0=7).

Focusing now on estimating ICU admissions, we estimate that with  $R_0=2.5$ , and again imagining that all epidemics are synchronized, there will be a median of 139 detainees infected who will require ICU admission after 30 days, growing to an aggregate of 475 patients by day 60 and 745 patients by day 90 (approximately 1.8% of the total population). Under the pessimistic scenario of  $R_0=7$ , the corresponding numbers of patients are 782, 971 and 973 on days 30, 60 and 90 respectively. This corresponds to approximately 2.3% of the total population.

### *Estimating hospital utilization during an unmitigated epidemic*

There are 33 facilities without hospitals within 10 miles of the ICE facility while all facilities have a hospital within 50 miles. A COVID-19 outbreak at a number of detention facilities would potentially overwhelm local ICU capacity within a 10- and 50-mile radius of each facility (Table 2). Under the most optimistic scenario ( $R_0=2.5$ ), and imagining synchronized epidemics across all facilities, estimated median aggregate ICU admissions from 57 facilities by day 30, 63 facilities by day 60, and 66 facilities by day 90 would exceed ICU capacity within 10 miles of the facility. These numbers include those facilities with no ICU capacity within 10 miles. Under the least optimistic scenario ( $R_0=7$ ), the numbers of facilities where ICU beds within 10 miles would not be adequate increases to 67 facilities within 30 days of onset and this persists through 60 and 90 days. A small number of facilities are also estimated to generate more ICU needs than ICU beds within 50 miles during the first 30 days of onset (six such facilities for  $R_0=2.5$  or 3.5 and nine such facilities for  $R_0=7$ ). For  $R_0=2.5$  and  $R_0=7$ , the aggregate number of patients requiring ICU admission exceeds available beds within 50 miles for 9 and 11 facilities at 90 days, respectively.

## **Discussion**

To our knowledge, this is the first analysis assessing the impact of COVID-19 on ICE detainees and the wider communities likely to care for detainees. Across the 111 ICE facilities we examined, and considering all three scenarios, the cumulative number of ICU admissions by day 90 for over half of facilities would exceed hospital capacity within a 10-mile radius. The impact on hospital capacity is lower if the radius was expanded to 50 miles, hovering around 8% of facilities exceeding ICU demand. These models do not take into account other concerns that would strain ICE's operational capacity at a time when staffing is likely to be a concern, such as the difficulty and risk to staff of repeatedly transporting and guarding detainees up to 50 miles distant from their facilities of origin. The timing and peak number of cases are driven by facility size, which also are important when considering preventive interventions.

Our findings suggest several possible interventions. Short of vaccination or a breakthrough treatment, effective interventions pertain to strategies to diffuse density. Lowering a facility's population density can slow the spread by lowering its  $R_0$ . Figure S1 in the supplementary Materials demonstrates the impact of doing so: the total number of infections drop, the time to peak infection shifts, and the proportion of the population infected is lower. This suggests two strategies for selective release: 1) release of detainees with chronic health conditions who are older in age, and could be better cared for in a community setting; or 2) release of detainees that are younger in age (under 35 years old) plus those with chronic health conditions regardless of age. The former would be a more limited release, while the latter would considerably enlarge the number of individuals released. Deportation through formal court processes--rather than release--may be a pathway to reducing the susceptible population in the United States. Given the current and growing regime of border closures, as well as the time, process, and number of contacts and transports necessary to deport rather than liberate a

detainee at this time, such a strategy would not be without serious complications and risks to ICE personnel, US border patrol, the courts, and the detainees themselves. This is compounded by both human rights concerns about returning detainees to countries of origin that are dangerous or oppressive. Such complications to a strategy of mass deportation may render this approach less viable than release into the general domestic community. While liberating most or all of the individuals currently being held would add individuals susceptible to complications to the broader population, it is a less infectious environment than a detention facility. In addition, ICE could reaffirm its March 18, 2020 commitment to stop apprehending all but the most dangerous people it targets for immigration enforcement, thereby reducing the number of new lodgings introduced to their facilities.<sup>24</sup>

Interventions within ICE facilities pose significant challenges, and reducing their R0 while maintaining detainee populations would require changes to a facility's physical space that may not be possible. The CDC<sup>25, 26</sup> and the Federal Bureau of Prisons<sup>27</sup> outline best practices for reducing the spread of infectious diseases in correctional settings, such as careful attention to hygiene and disinfecting surfaces, prompt quarantine, isolation and treatment measures, awareness and mitigation of the risks of physical contact between persons, and designing daily routines and systems that minimize interpersonal interaction in the event of outbreaks. It is unknown if distribution of PPE and strict handwashing protocols, for example, could help slow transmission (i.e., lower the R0) nor how quickly this could improve matters. Even when aligned with published standards, detention facilities are typically overcrowded,<sup>28</sup> house multiple individuals in bunk bed settings, and offer limited potential for social distancing, reducing the effectiveness of these measures even when they are carefully followed. The recommended six feet of separation for social distancing necessitates an approximate 28 square foot area for each detainee; however, this exceeds the minimum 25 sq. foot standard published by the American Correctional Association. Many ICE holding areas are not able to meet that standard, and some only afford detainees 3 sq. feet of space in holding areas.<sup>29</sup> To at least some extent, this crowding is by design: the emphasis at these facilities is on behavior regulation techniques of control and surveillance made possible by a high population density, and lower operating costs by minimizing the size of the facilities necessary to carry out this function.<sup>30</sup> Regardless of what the actual R0 of COVID-19 in ICE detention facilities turns out to be, it is likely to be higher than returning the same population of individuals to the wider community.

This analysis has several important limitations. The data used to populate the models were the most complete and up-to-date that could be obtained at the time of analysis. A crucial limitation is our reliance upon estimates of the proportions of individuals requiring hospitalization and ICU access, across different ages, reported by a CDC report based on limited data: in time, these proportions may prove to be over-estimates and the calculations we provide seen as overestimates. There are no known estimates of R0 for COVID-19 in a given prison or detention population, so we relied on an analogous population. To account for this imprecision, we modeled three plausible R0 estimates, elevating the likelihood that the system's actual R0 was modeled within this range. Our estimates of eventual prevalence for a confined population substantially exceed available data from cruise ship and navy ship outbreaks, but are very much in line with recent reports from a prison setting. Full analysis of data from confined populations will be an excellent topic for full retrospective analysis. The treatment capacity of local hospitals was calculated using data made public on April 3<sup>rd</sup>, but actual capacity over time will vary depending on the rate at which the virus spreads in the general population, and we may therefore have underestimated need. While data reporting the current number of ICE detainees may differ from those used in this analysis, they lack the facility-level specificity needed to calculate ICU bed demand. For example, news reports indicate that ICE bookings have decreased and summary deportations after attempting to enter the U.S. have reportedly



increased as a result of the COVID-19 pandemic.<sup>31</sup> If these data were publicly available at the facility level, our results could be rendered more precise. A dearth of similar studies resulted in the need to approximate key values. The actual age distribution of ICE detainees at each facility is unknown, and we relied on aggregate estimates from 2019.<sup>19</sup> We assumed a fixed contact rate over the course of the epidemic; a variable rate may be more appropriate, especially if ongoing studies derive a variable rate specific to the COVID-19 epidemic. Our model included counties in their entirety if any part of them fell within the specified radii of 10 and 50 miles, so it is likely that community health care capacities within these radii are overestimated. We note that our key assumption in determining how many ICE facilities would overwhelm hospital ICU capacity within a 10- and 50- mile radius was that all available ICU beds in these hospitals would be allocated to detainees in need of care. Overall, these assumptions suggest that our findings may have underestimated the number of infections and the number of facilities that will overwhelm the community ICU capacity.

Our results assume a static population within ICE facilities. In reality, detainees enter and depart the facilities, and are moved between them. Given high rates of infection, especially among economically disadvantaged populations, in the general population of the United States, it is unclear whether ingress/egress of detainees would typically represent a source or a sink of infection from ICE facilities. To study this in full would require extensive data from ICE, coupled to a model of community transmission across the country, and is beyond the scope of our current work.

Finally, we presented the results here where all outbreaks were synchronized to start on the same day. There would likely be variation in the date of initial case within each facility and subsequent peaks would potentially be distributed over a long time-period. However, the analysis compared each facility's hospital needs with their corresponding community's ability to meet them using estimates that would not change based on such dates. Asynchronicity would principally mean the model's results would not aggregate as demonstrated, but the individual facility-level analyses would still be illustrative of local challenges no matter how they were timed relative to those of other facilities.

The public health implications of this study are critical. They suggest that decisive action on the part of ICE will not only reduce morbidity and mortality outcomes in its population of detained immigrants, but minimize negative health outcomes in the communities that support ICE's detention facilities with health care resources. If hesitation prevails instead, and more limited measures on the part of ICE prove ineffective, then the successful social distancing strategies implemented in a community may be undone by the large number of detainee infectious disease cases that its hospitals must care for.

The study's other public health implications will endure beyond a pandemic which has brought the longstanding vulnerabilities of the nation's undocumented population into clearer relief. The COVID-19 pandemic highlights the need for further research into the health of the nation's undocumented immigrants and those detained by ICE. Beyond disaster planning, taking steps to improve the health and wellbeing of underserved populations is fundamental to public health.

## References

1. Kassie E. Detained: How the US built the world's largest immigrant detention system. *The Guardian*. Available at: <https://www.theguardian.com/us-news/2019/sep/24/detained-us-largest-immigrant-detention-trump>. Accessed April 16, 2020.
2. Alvarez P, Shoichet CE. First ICE detainee tests positive for coronavirus. Available at: <https://www.cnn.com/2020/03/24/us/ice-detainee-coronavirus/index.html>. Accessed April 15, 2020.
3. U.S. Immigration and Customs Enforcement. ICE Guidance on COVID-19. Available at: <https://www.ice.gov/coronavirus>. Accessed April 16, 2020.
4. Ellis B, Hicken M. Medical care in immigrant detention centers under fire. Available at: <https://www.cnn.com/2019/10/04/us/immigrant-medical-care-wellpath-invs/index.html>. Accessed April, 16, 2020.
5. Shoichet C, Bracho-Sanchez E. These doctors risked their careers to expose the dangers children face in immigrant family detention. *CNN*. Available at: <https://www.cnn.com/2019/05/23/health/ice-family-detention-whistleblowers-doctors/index.html>. Accessed April 16, 2020.
6. American Immigration Council. Complaint demands investigation into inadequate medical and mental health care condition in immigration detention center. Available at: <https://www.americanimmigrationcouncil.org/advocacy/immigrants-inadequate-medical-care-aurora>. Accessed April 16, 2020.
7. Homeland Security Office of Inspector General. Concerns about ICE detainee treatment and care at four detention facilities. June 3, 2019. Available at: <https://www.oig.dhs.gov/sites/default/files/assets/2019-06/OIG-19-47-Jun19.pdf>. Accessed April 15, 2020.
8. Ortega AN, McKenna RM, Kemmick Pintor J, *et al*. Health Care Access and Physical and Behavioral Health Among Undocumented Latinos in California. *Medical Care*. Nov 2018;56(11):919-926.
9. Beck TL, Le T-K, Henry-Okafor Q, Shah MK. Medical Care for Undocumented Immigrants: National and International Issues. *Primary care*. 2017;44(1):e1-e13.
10. Carter JG, Mohler G, Ray B. Spatial Concentration of Opioid Overdose Deaths in Indianapolis: An Application of the Law of Crime Concentration at Place to a Public Health Epidemic. *Journal of Contemporary Criminal Justice*. 2019;35(2):161-185.
11. Volpenhein S, Candisky C. Inmates, staff worry about care as Marion prison becomes one of largest outbreaks in U.S. *Marion Star*. April 20, 2020. Available at: <https://www.marionstar.com/story/news/local/2020/04/20/marion-county-ohio-coronavirus-prison-outbreak-largest-us/5166499002/>. Accessed April 20, 2020.
12. Cases surge in an Ohio prison, making it a top U.S. hot spot. *The New York Times*; 2020.
13. Centers for Disease Control and Prevention. Hospitalization, intensive care unit (ICU) admission, and case–fatality percentages for reported COVID–19 cases, by age group —United States, February 12–March 16, 2020. *Morbidity and Mortality Weekly Report*. 2020;69(12):343-346.
14. Zhang S, Diao M, Yu W, Pei L, Lin Z, Chen D. Estimation of the reproductive number of novel coronavirus (COVID-19) and the probable outbreak size on the Diamond Princess cruise ship: A data-driven analysis. *Int J Infect Dis*. Feb 22 2020;93:201-204.
15. Rocklöv J, Sjödin H, Wilder-Smith A. COVID-19 outbreak on the Diamond Princess cruise ship: estimating the epidemic potential and effectiveness of public health countermeasures. *J Travel Med*. Feb 28 2020.

16. Backer JA, Klinkenberg D, Wallinga J. Incubation period of 2019 novel coronavirus (2019-nCoV) infections among travellers from Wuhan, China, 20-28 January 2020. *Euro Surveill.* Feb 2020;25(5).
17. Wölfel R, Corman VM, Guggemos W, *et al.* Virological assessment of hospitalized patients with COVID-2019. *Nature.* April 1 2020.
18. TRAC Immigration. About the Data - ICE Detention. Available at: [https://trac.syr.edu/phptools/immigration/detention/about\\_data.html](https://trac.syr.edu/phptools/immigration/detention/about_data.html). Accessed April 12, 2020.
19. Freedom for Immigrants. Detention by the numbers. Available at: <https://www.freedomforimmigrants.org/detention-statistics>. Accessed April 17, 2020.
20. Definitive Healthcare USA. Definitive Healthcare bed locations ISO-19139 Metadata. Available at: [https://services7.arcgis.com/LXCny1HyhQCUSueu/arcgis/rest/services/Definitive\\_Healthcare\\_USA\\_Hospital\\_Beds/FeatureServer/0/metadata?format=default&f=html](https://services7.arcgis.com/LXCny1HyhQCUSueu/arcgis/rest/services/Definitive_Healthcare_USA_Hospital_Beds/FeatureServer/0/metadata?format=default&f=html).
21. Definitive Healthcare. COVID-19 Capacity Predictor. Available at: <https://www.definitivehc.com/resources/covid-19-capacity-predictor>. Accessed April 15, 2020.
22. United States Military Health System. Zip Code Catchment Query Tool. Available at: <https://health.mil/Military-Health-Topics/Technology/Support-Areas/Geographic-Reference-Information/Zip-Code-Catchment-Query-Tool>. Accessed April 15, 2020.
23. United States Government Accountability Office. Immigration enforcement: Arrests, detentions, and removals, and issues related to special populations. Vol GAO-20-36; 2019.
24. Sacchetti M, Hernández A. ICE to stop most immigration enforcement inside U.S., will focus on criminals during coronavirus outbreak. March 18, 2020. Available at: [https://www.washingtonpost.com/national/ice-halting-most-immigration-enforcement/2020/03/18/d0516228-696c-11ea-abef-020f086a3fab\\_story.html](https://www.washingtonpost.com/national/ice-halting-most-immigration-enforcement/2020/03/18/d0516228-696c-11ea-abef-020f086a3fab_story.html). Accessed April 20, 2020.
25. Centers for Disease Control and Prevention. Resources for correctional and detention facilities: Before and during an outbreak. Available at: <https://www.cdc.gov/coronavirus/2019-ncov/community/correction-detention/index.html>. Accessed April 16, 2020.
26. Centers for Disease Control and Prevention. Interim Guidance on Management of Coronavirus Disease 2019 (COVID-19) in Correctional and Detention Facilities. Available at: <https://www.cdc.gov/coronavirus/2019-ncov/community/correction-detention/guidance-correctional-detention.html>. Accessed April 15, 2020.
27. Federal Bureau of Prisons. Health Management Resources: Clinical Guidelines. Available at: [https://www.bop.gov/resources/health\\_care\\_mngmt.jsp](https://www.bop.gov/resources/health_care_mngmt.jsp). Accessed April 15, 2020.
28. Dolovich S. *Prison Conditions*: eScholarship, University of California; 2018.
29. Chalabi M. How severe is overcrowding at some US migrant facilities? Very. *The Guardian.* July 5, 2019. Available at: <https://www.theguardian.com/us-news/2019/jul/05/us-migrant-facilities-severe-overcrowding>. Accessed April 20, 2020.
30. Jewkes Y. The Aesthetics and Anaesthetics of Prison Architecture. In: Simon J, Temple N, eds. *Architecture and Justice*. New York: Routledge; 2013:33-46.
31. Owen Q. Immigrant detention numbers decline as COVID-19 spikes and controversial border policies take hold. April 14, 2020. Available at: <https://abcnews.go.com/Politics/immigrant-detention-numbers-decline-covid-19-spikes-controversial/story?id=70094940>. Accessed April 18, 2020.

**Table 1:** For different sized facilities and estimates of the basic reproduction number  $R_0$ , estimated median (and 95% confidence intervals) aggregate number of infected detainees, to 30, 60 and 90 days after the outbreak began. Median hospitalization and ICU admission numbers (to day 90) are also shown.

<b><math>R_0 = 2.5</math></b>					
<b>Facility size</b>	<b>Median number (95% CI) COVID-19 positive</b>			<b>Median number (95% CI), 90 days</b>	
	<b>30 days</b>	<b>60 days</b>	<b>90 days</b>	<b>Hospitalizations</b>	<b>ICU admissions</b>
<b>50</b>	25 (7,36)	36 (11,43)	38 (11,44)	6	1
<b>100</b>	36 (7,62)	71 (15,87)	80 (19,90)	13	2
<b>500</b>	60 (12,128)	258 (46,366)	386 (181,437)	58	9
<b>1000</b>	494 (491,495)	363 (35,605)	722 (203,834)	114	17

<b><math>R_0 = 3.5</math></b>					
<b>Facility size</b>	<b>Median number (95% CI) COVID-19 positive</b>			<b>Median number (95% CI), 90 days</b>	
	<b>30 days</b>	<b>60 days</b>	<b>90 days</b>	<b>Hospitalizations</b>	<b>ICU admissions</b>
<b>50</b>	33 (16,42)	42 (32,45)	43 (35,45)	7	1
<b>100</b>	59 (24,80)	88 (69,94)	90 (79,94)	15	2
<b>500</b>	136 (36,232)	422 (277,460)	466 (441,480)	70	11
<b>1000</b>	163 (40,309)	792 (491,884)	933 (891,956)	148	22

<b><math>R_0 = 7</math></b>					
<b>Facility size</b>	<b>Median number (95% CI) COVID-19 positive</b>			<b>Median number (95% CI), 90 days</b>	
	<b>30 days</b>	<b>60 days</b>	<b>90 days</b>	<b>Hospitalizations</b>	<b>ICU admissions</b>
<b>50</b>	43 (38,45)	45 (44,45)	45 (44,45)	7	1
<b>100</b>	89 (77,93)	95 (93,95)	95 (93,95)	16	2
<b>500</b>	407 (310,444)	493 (489,495)	494 (491,495)	75	11
<b>1000</b>	732 (519,823)	989 (982,994)	993 (989,995)	157	24

**CI:** Confidence interval

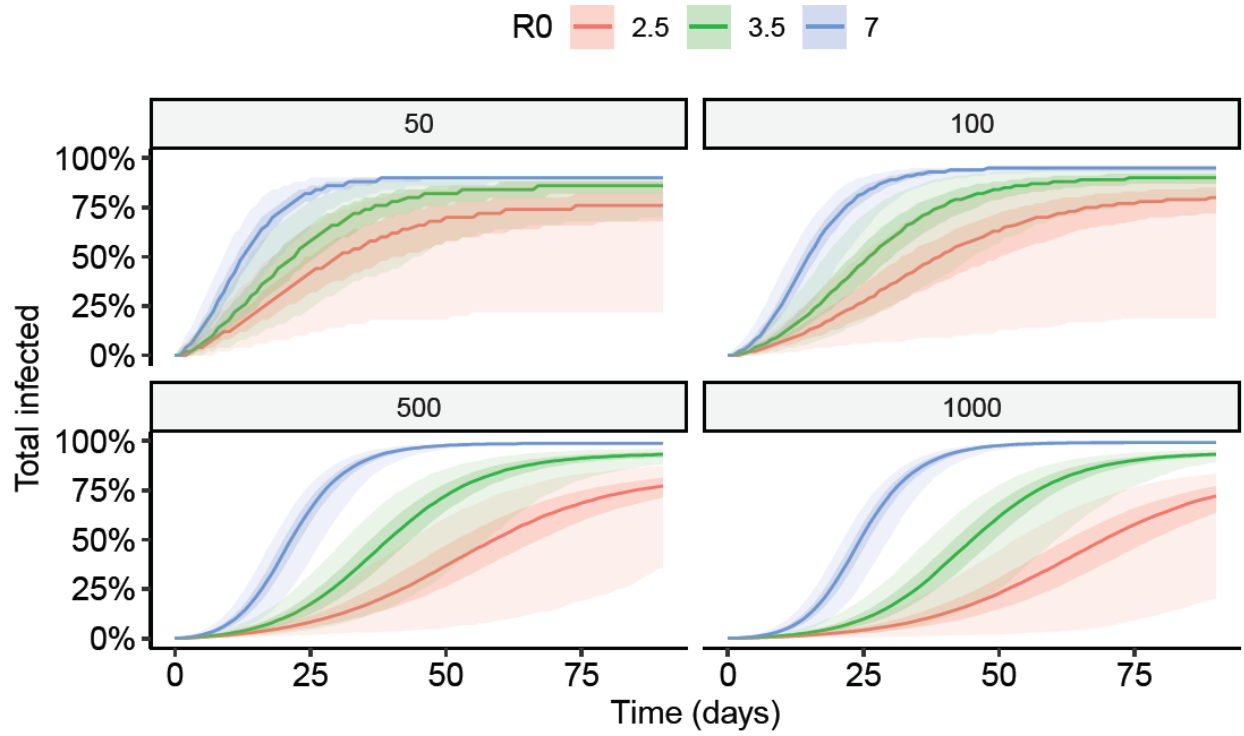
**Table 2:** Number of ICE facilities with an overwhelmed hospital catchment and additional ICU beds needed to meet ICE demand, by R0 and size of facility. This information is presented for days 30, 60 and 90 after the start of an outbreak.

<b>ICE facilities where ICU bed demand exceeds capacity, R0 = 2.5</b>			
<b>Hospital catchment</b>	<b>30 days</b>	<b>60 days</b>	<b>90 days</b>
<b>10 miles</b>	57	63	66
<b>50 miles</b>	6	7	9

<b>ICE facilities where ICU bed demand exceeds capacity, R0 = 3.5</b>			
<b>Hospital catchment</b>	<b>30 days</b>	<b>60 days</b>	<b>90 days</b>
<b>10 miles</b>	59	67	67
<b>50 miles</b>	6	9	11

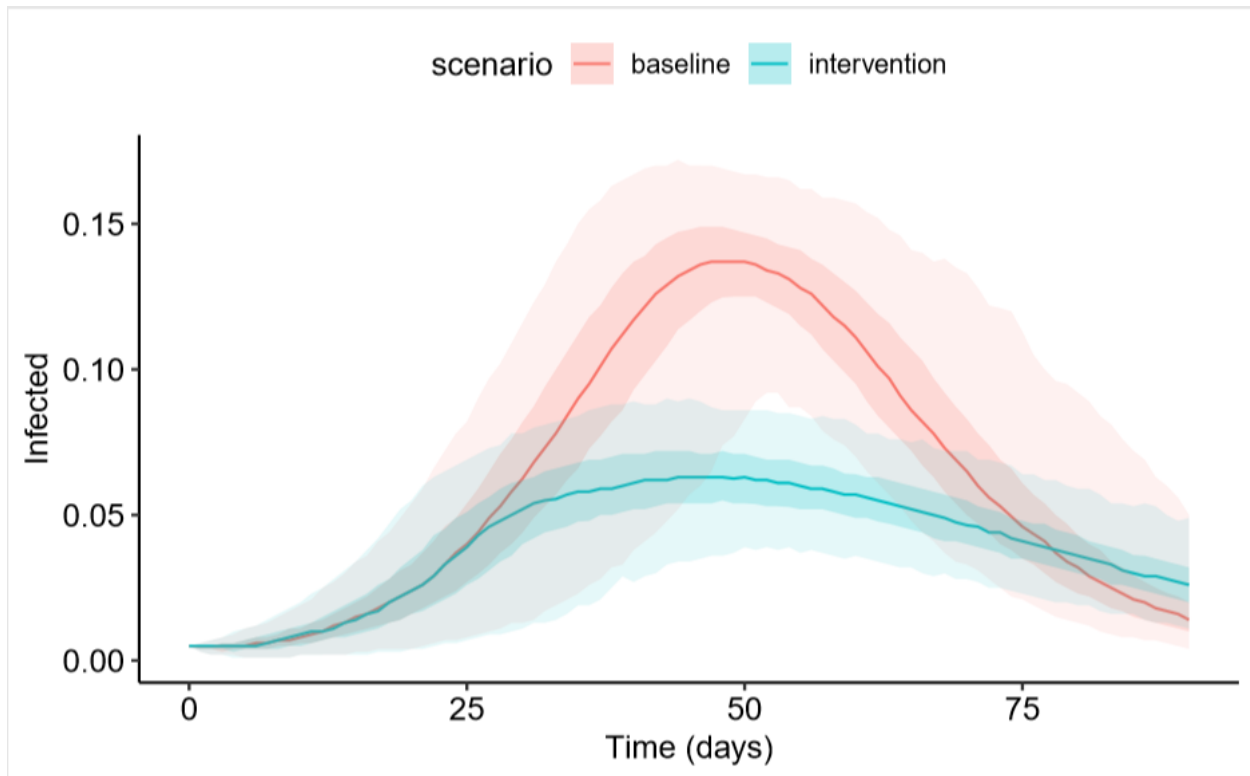
<b>ICE facilities where ICU bed demand exceeds capacity, R0 = 7.0</b>			
<b>Hospital catchment</b>	<b>30 days</b>	<b>60 days</b>	<b>90 days</b>
<b>10 miles</b>	67	67	67
<b>50 miles</b>	9	11	11

**Fig. 1** Proportion of population infected with Covid-19 over time by R0 value and facility size



## Supplementary Materials

### Intervention scenario



**Fig. S1** Comparison of baseline to intervention scenarios where total population is 1000 and baseline  $R_0$  is 3.5. Solid lines represent the median, with darker shading representing the interquartile range and the lighter shading representing the 95% CIs at each time-point.

A simulation of a generic intervention was performed to demonstrate the potential impact of an intervention that lags behind the initial outbreak. The baseline medium scenario where the  $R_0$  is 3.5 and the population is 1000 was selected. When the number of infected individuals (not symptomatic) reaches 10% of the total population, the transmissibility is reduced by a half for the rest of the simulation run. Broadly, the peak of the epidemic remains the same to where there is no intervention, however the peak number of infected individuals is reduced by approximately a half (Figure S1).

## Distribution of peak size and time of epidemic

	Population			
R0	50	100	500	1000
2.5	9 (5 - 14)	14 (5- 23)	53 (30 - 71 )	99 (47 - 126 )
3.5	11 (6 - 17)	19 (11 - 28)	79 (59 - 99 )	153 (128 - 181)
7	15 (10 - 21)	28 (20 - 37)	125 (107 - 146)	246 (220 - 275 )

**Table S1.** Distribution of infected individuals at peak of epidemic for R0 and population sizes considered. Median and 95% CI are shown.

	Population			
R0	50	100	500	1000
2.5	19 (0 - 55)	32 (0 - 73)	58 (35 - 89)	69 (47 - 90)
3.5	19 (3 - 46)	27 (14 - 49)	42 (32 - 62)	49 (38 - 66)
7	13 (7 - 25)	17 (11 - 27)	25 (20 - 32)	28 (24 - 35)

**Table S2.** Distribution of time in days at peak of epidemic for R0 and population sizes considered. Median and 95% CI are shown.

The peak time and number of infectious individuals (individuals in state I) were calculated for each simulation run of the epidemic by the fixed population size and R0 used (Table S1 and S2). Peak time was estimated as the day with the maximum number of infectious individuals up until day 90. As R0 increases the peak of the epidemic arrives earlier and the uncertainty is reduced.